



EMPLOYMENT REPORT 2018



UNIVERSITY
OF MANITOBA

ABOUT

For over 80 years the I.H. Asper School of Business has provided world-class education to leaders and innovators who contribute ethically to the social and economic well-being of Manitoba and the world. We are committed to transforming research and scholarship, building a community that creates an outstanding learning environment, forging connections to foster high impact community engagement, and inspiring minds through innovative and quality teaching and learning. Our students thrive because of our strong connections with the business community, in a region with high labour demand across all industries, and our intimate class sizes and dynamic course offerings provide an opportunity to exchange ideas and dig deep into the issues and challenges of today's business world.

MISSION

To be on the forefront of knowledge creation and to educate innovative business leaders who will contribute ethically to the social and economic well being of Manitoba, Canada and the world.

VISION

To be recognized as a leading business school with a reputation for high quality teaching and research, an exceptional student experience, and strong engagement with the business and greater community.



The I.H. Asper School of Business is one of the world's leading institutions of business education and research. Established in 1937 and accredited for the past two decades, we strive for teaching excellence and innovative research. We reflect the values embodied in our province of connected community, cultural diversity, and strong work ethic. Our 18,000 alumni have and continue to strengthen businesses and hold leadership positions in organizations around the world.

OUR STUDENTS

The Asper School of Business has guided over 18,000 students in discovering their careers. We offer degree programs at the undergraduate, master's and PhD levels, over a wide range of interdisciplinary topics. Our undergraduate and MBA students consistently outperform their peers in international case competitions. Our students work at, and lead some of the world's most successful companies, and the world-class researcher students that comprise our PhD program are mentored by influential researchers from around the world.

OUR GRADUATES

In the 2017-2018 academic year, students received degrees from the Asper School of Business in our BComm (Hons), MBA, MFin, MSc and PhD programs.

 **425**
UNDERGRADUATE

 **51**
MBA

 **8**
MFin

 **32**
PhD

 **23**
MSc

The Asper School of Business Career Development Centre conducted a survey of the MBA graduating classes of October 2017, February and May 2018. This is a summary of the results. Out of a class of 51 students, 43 graduates responded to the survey = **84% response rate**. The statistics were calculated using the information provided by those that responded.

The Asper School of Business Career Development Centre conducted a survey of the Bachelor of Commerce (Honours) graduating class of 2018. This is a summary of the results. Out of 425 graduating students, 302 students responded to the survey = **71% response rate**. The statistics were calculated using the information provided by those that responded.

MASTER OF BUSINESS ADMINISTRATION

ASPER MBA GRADUATING CLASS OF 2018



TOP THREE REASONS STUDENTS ENROLLED IN THE MBA PROGRAM

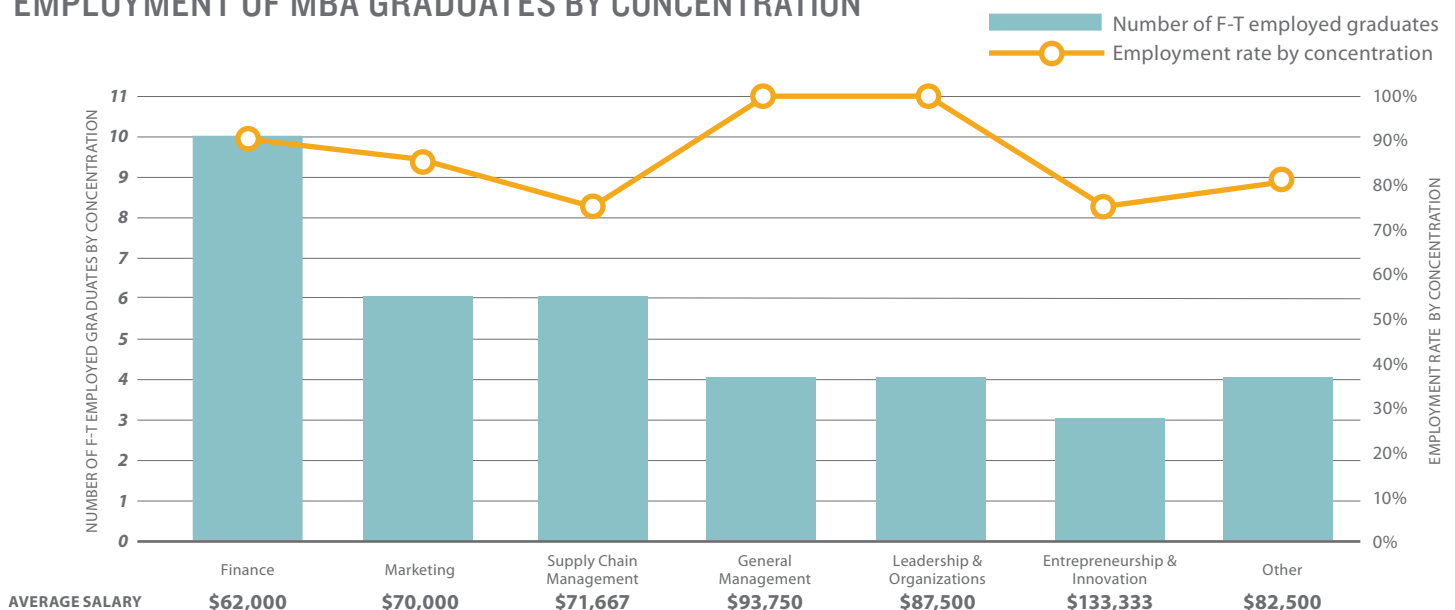


10 MFIN GRADUATES FROM OUR FIRST COHORT

The Asper School of Business introduced its Master of Finance (MFin) degree program in August 2017 with an enrollment of 10 students.

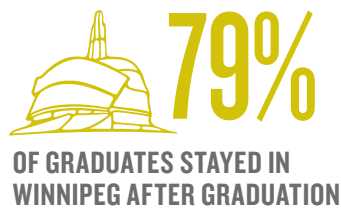
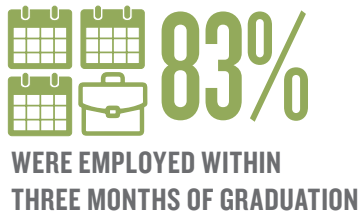
The MFin degree is designed for individuals wanting to pursue the Chartered Financial Analyst (CFA)® designation. Offered full-time over twelve months, the MFin prepares students for writing all three levels of exams needed to obtain the CFA designation.

EMPLOYMENT OF MBA GRADUATES BY CONCENTRATION

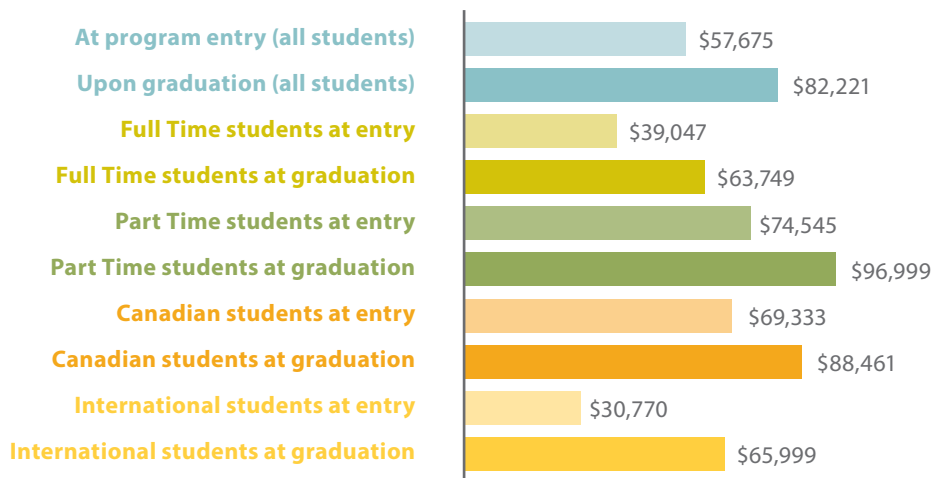


Note: Other includes Health Administration, International and Emerging Markets, and Sustainability

CLASS OF 2018 EMPLOYABILITY



AVERAGE SALARY



\$82,221

Average salary for all MBA graduates

\$88,461

Average salary for domestic graduates

\$65,999

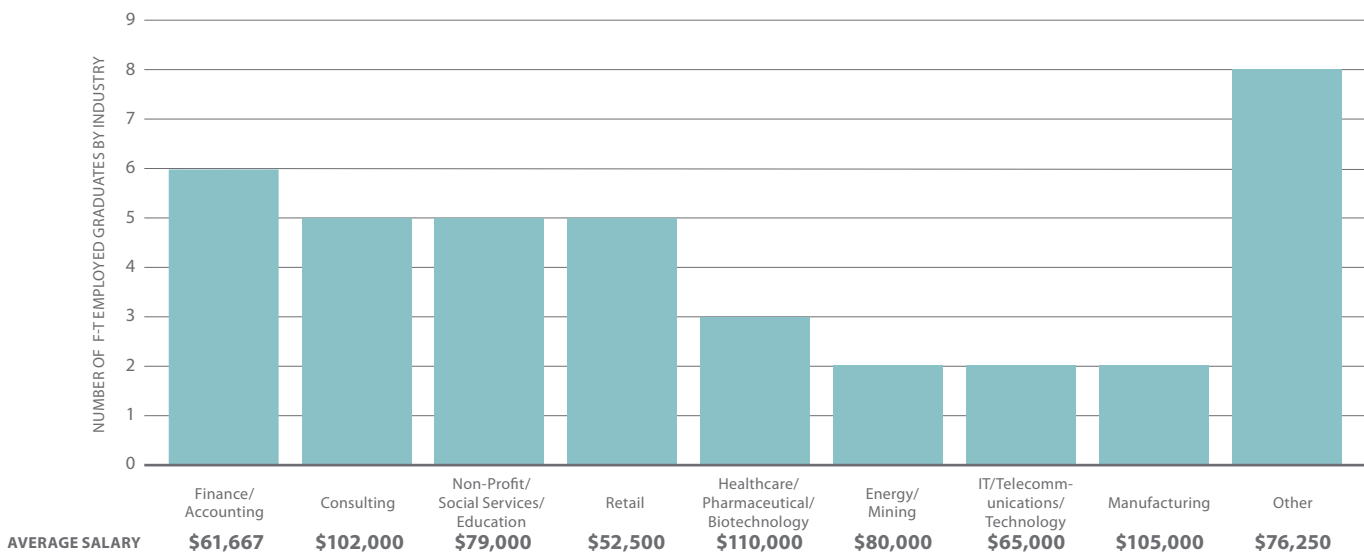
Average salary for international graduates

+43% SALARY

Average salary increase of 43% after graduation

EMPLOYMENT OF MBA GRADUATES BY INDUSTRY

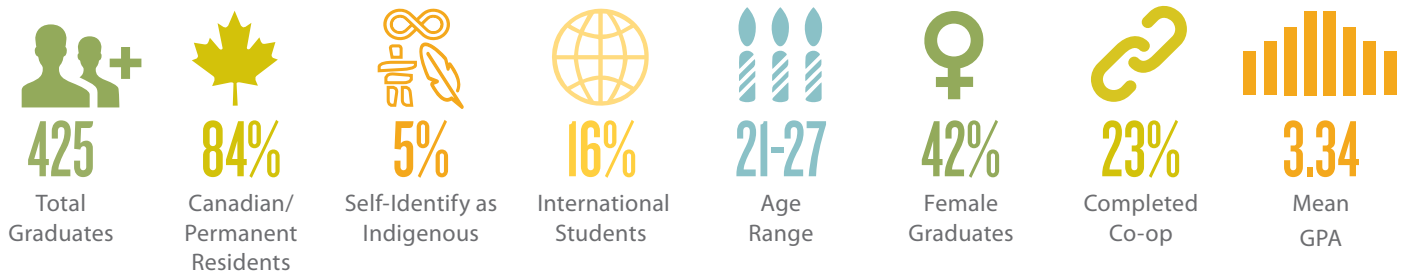
Number of F-T employed graduates



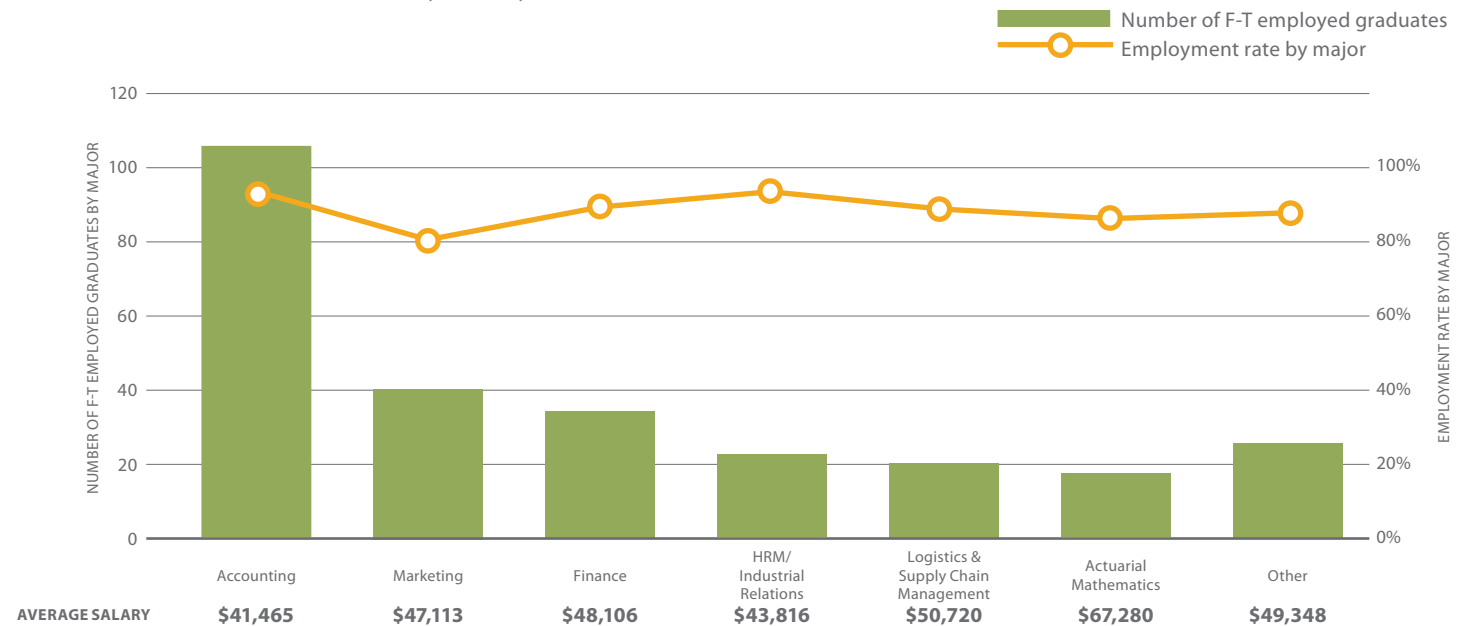
Note: Other includes Agriculture, Consumer Packed Goods, Government, Food Production, Insurance and Post-Secondary Education

BACHELOR OF COMMERCE

ASPER BCOMM (HONS) GRADUATING CLASS OF 2018



EMPLOYMENT OF BCOMM (HONS) GRADUATES BY MAJOR



Note: Other includes Entrepreneurship/Small Business, Generalist, Indigenous Business Studies, International Business, Leadership & Organization, Management Information Systems, and Management of Organizations



77%

UTILIZED CAREER DEVELOPMENT SERVICES

Career Development Centre acts as a critical link between our business community and the Asper School of Business in providing employment opportunities for all students.

CLASS OF 2018 EMPLOYABILITY

 **94%**

WERE EMPLOYED FULL-TIME WITHIN THREE MONTHS OF GRADUATION

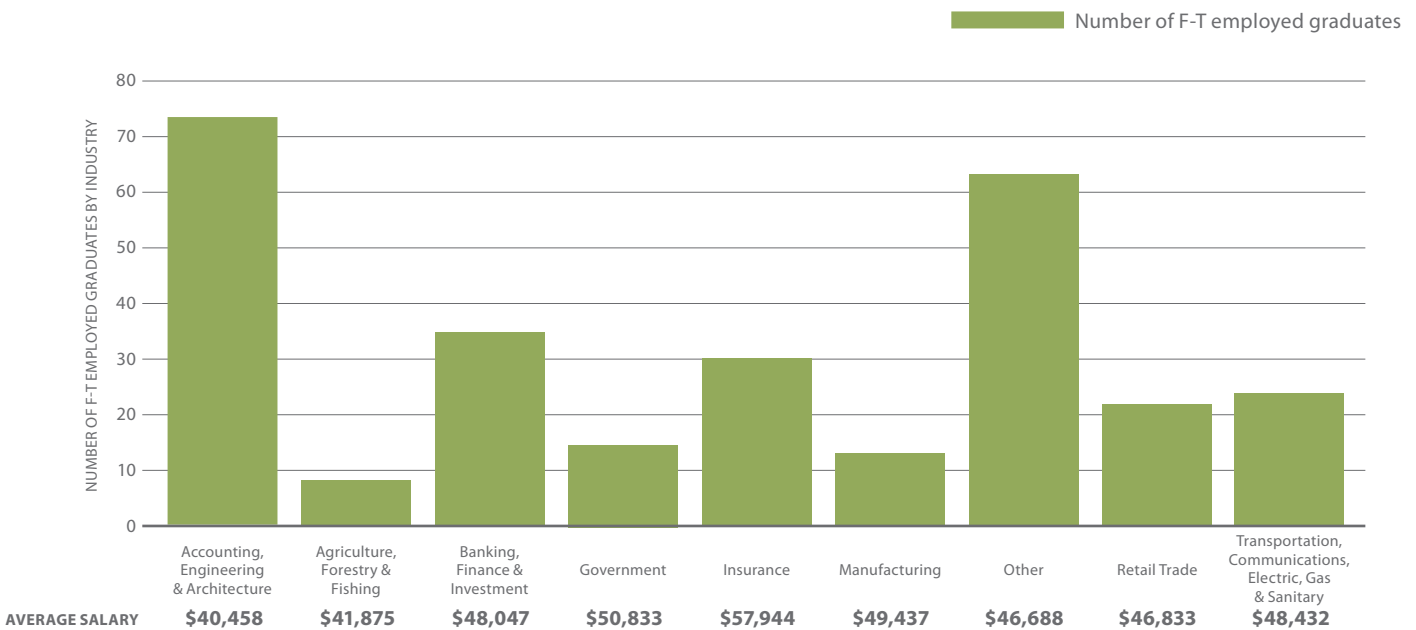
\$46,893

AVERAGE SALARY OF ALL GRADUATES

 **89%**

ARE EMPLOYED FULL-TIME IN MANITOBA

EMPLOYMENT OF BCOMM (HONS) GRADUATES BY INDUSTRY



Note: Other includes Aerospace, Autobody, Construction, Consulting, Food and Beverage, IT, Marketing, Military, Non-Profit Organization, Promotional Products Software, Real Estate, Technology Consulting

ASPER CO-OP PROGRAM



The Asper School of Business Co-op Program is one of the largest Co-op programs offered at the University of Manitoba, and the only program in Manitoba accredited by CEWIL Canada – a testament to its high quality standards. The Co-op program provides our students with critical skills, valuable knowledge and the right attitude that sets them apart in the eyes of the employers.

99% 

WERE EMPLOYED FULL-TIME WITHIN THREE MONTHS OF GRADUATION

\$48,776

AVERAGE SALARY OF ALL CO-OP PROGRAM GRADUATES

23% 

OF ALL BCOMM (HONS) GRADUATES WERE ASPER CO-OP STUDENTS

WHERE OUR GRADUATES WORK

Actionmarguerite	Direct Focus Marketing Communications	MacDonalds Sporting Goods	RBC
Air Canada	Distinct Image Marketing	Magellan Aerospace	RBC Dominion Securities
Aon Canada	DSB	Magellan Luxury Hotels	Richardson International
Appelt's Diamonds	Duha Group	Magnus LLP	Robertson Early Enrichment Program
Assiniboine Credit Union	Economic Development Winnipeg	Manitoba Hydro	Robertson Shypit Soble Wood
Association of Canadian Distilleries	EH Price	Manitoba Public Insurance	Robin Electric
Autoport	Ellement Consulting Group	Maple Leaf Foods	Scarrow & Donald LLP
B.A. Robinson	Emotion Media	Market Zone Productions	Scotia McLeod
Bank of America Merrill Lynch	Encore Business Solutions	Master Tax Solutions	Scotiabank
Barkman Concrete	Enterprise Holdings Ltd.	Melet Plastics	Seaboard Marine
BDO Canada	Ernst & Young LLP	MNP LLP	Shindico
Birchwood Automotive Group	Exchange Group CPA	Monsanto	Shoppers Drug Mart
Bird Construction	Focus Selling Systems	Morneau Shepell	SkiptheDishes
Bison Transport	Fort Group Chartered Professional Accountants Inc.	Motor Coach Industries	Steinbach Credit Union
BlueMaxx	Freedom 55	Mr. Streamer	Stikeman Elliot LLP
BMW Group Canada	Friesen Insurance Brokers	Munich Reinsurance	Suckerpunch Creative
Brunet Monuments	Frontier Supply Chain Solutions	Murray Autogroup	Sunlife Financial
Buhler Industries	Frostiak and Leslie Chartered Accountants	New York Life	Tamarack Homes
Caisse Financial Group	Government of Canada	Norima Consulting	Tangent Animation
Cambrian Credit Union	Grant Thornton	OI Group	Tech West Canada
Canada Border Services Agency	Great West Life	ONBusiness Chartered Professional Accountants Inc	TEK Systems
Canada ICI Capital Corporation	Gremming	Palliser Furniture	TelPay
Canada Post	Hill View Agro	Pankee Inc.	The Boeing Company
Canada Revenue Agency	Howe Harrell & Associates	Paul Henzel Lumber	The Dufresne Group
Canadian Armed Forces	HUB International	Pavilion Advisory Group	The North West Company
Canadian Western Bank	IG Wealth Management	Penta Protective Coatings	Think Shift
Cardinal Capital Management	I-Max	People First HR	University of Manitoba
Cargill	Integrationworx Ltd.	PepsiCo	Value Partners Investments
CBRE	Jagger	Plainsview Credit Union	VioRR Marketing Group
CIBC	Jem Insurance	Pollard Banknote	Visions Electronics
City of Winnipeg	John Hancock	Precept MGMT	Volume Freight Solutions
Collins Barrow	KPMG LLP	Priceline.com	Waterite Inc.
commonsku	KRUT Agency	Province of Manitoba	Wawanesa
CP Railway	KWB Chartered Accountants	Public Services & Procurement Canada	Wellington-Altus Private Wealth
CWB National Leasing	LMC Diabetes Clinic	PwC	Western Financial Group
Deloitte	Loblaw	Quadrant Private Wealth	Winning Combination
Dentsu Aegis Network	Longboat Development Corp	RAPID RTC	YMCA-YWCA of Winnipeg

Note: Bolded companies represent the top employers of our Asper School of Business graduates.

CONTACT US

Career Development Centre
Asper School of Business
University of Manitoba
254 Drake Centre
Winnipeg, Manitoba R3T 5V4

Asper_cdc@umanitoba.ca
+1 (204) 474-6596
Umanitoba.ca/asper/cdc

